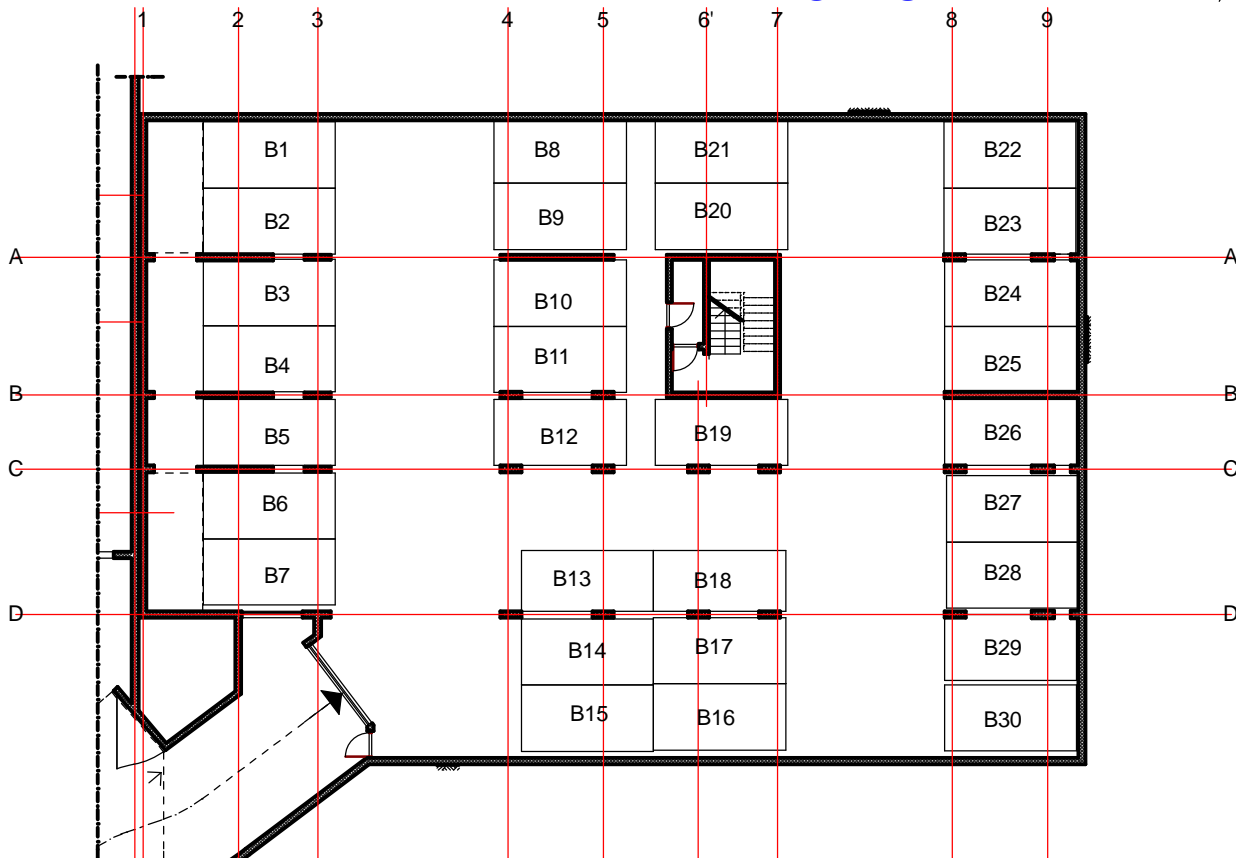


NAPOMENA: UKUPNO 15 PARK. MJESTA  
U PODRUMU I (ILI) SUTERENU OBJ. "B"  
SU ZA STANOVE OBJEKTA "A"

## GARAŽE PODRUM "B"



| OZNAKA | DIMENZIJE | POVRŠINA (m <sup>2</sup> ) | NAPOMENA |
|--------|-----------|----------------------------|----------|
| B1     | 2,5 X 5,0 | 12,5                       |          |
| B2     | 2,5 X 5,0 | 12,5                       |          |
| B3     | 2,5 X 5,0 | 12,5                       |          |
| B4     | 2,5 X 5,0 | 12,5                       |          |
| B5     | 2,5 X 5,0 | 12,5                       |          |
| B6     | 2,5 X 5,0 | 12,5                       |          |
| B7     | 2,5 X 5,0 | 12,5                       |          |
| B8     | 2,5 X 5,0 | 12,5                       |          |
| B9     | 2,5 X 5,0 | 12,5                       |          |
| B10    | 2,5 X 5,0 | 12,5                       |          |
| B11    | 2,5 X 5,0 | 12,5                       |          |
| B12    | 2,5 X 5,0 | 12,5                       |          |
| B13    | 2,3 X 5,0 | 11,5                       |          |
| B14    | 2,5 X 5,0 | 12,5                       |          |
| B15    | 2,5 X 5,0 | 12,5                       |          |
| B16    | 2,5 X 5,0 | 12,5                       |          |
| B17    | 2,5 X 5,0 | 12,5                       |          |
| B18    | 2,3 X 5,0 | 11,5                       |          |
| B19    | 2,5 X 5,0 | 12,5                       |          |
| B20    | 2,5 X 5,0 | 12,5                       |          |
| B21    | 2,5 X 5,0 | 12,5                       |          |
| B22    | 2,5 X 5,0 | 12,5                       |          |
| B23    | 2,5 X 5,0 | 12,5                       |          |
| B24    | 2,5 X 5,0 | 12,5                       |          |
| B25    | 2,5 X 5,0 | 12,5                       |          |
| B26    | 2,5 X 5,0 | 12,5                       |          |
| B27    | 2,5 X 5,0 | 12,5                       |          |
| B28    | 2,5 X 5,0 | 12,5                       |          |
| B29    | 2,5 X 5,0 | 12,5                       |          |
| B30    | 2,5 X 5,0 | 12,5                       |          |